

SITE PLAN
SCALE: 1" = 20'-0"

COMMONWEALTH OF PENNSYLVANIA
EDWARD G. RENDELL, GOVERNOR
DEPARTMENT OF GENERAL SERVICES
JAMES P. CREEDON, SECRETARY
BUREAU OF ENGINEERING AND ARCHITECTURE
HARRISBURG, PENNSYLVANIA

BUREAU DIRECTOR APPROVAL _____

DESIGN DIVISION CHIEF APPROVAL _____

<USING AGENCY INITIALS> APPROVAL _____

REGISTERED ARCHITECT _____ PROFESSIONAL ENGINEER _____

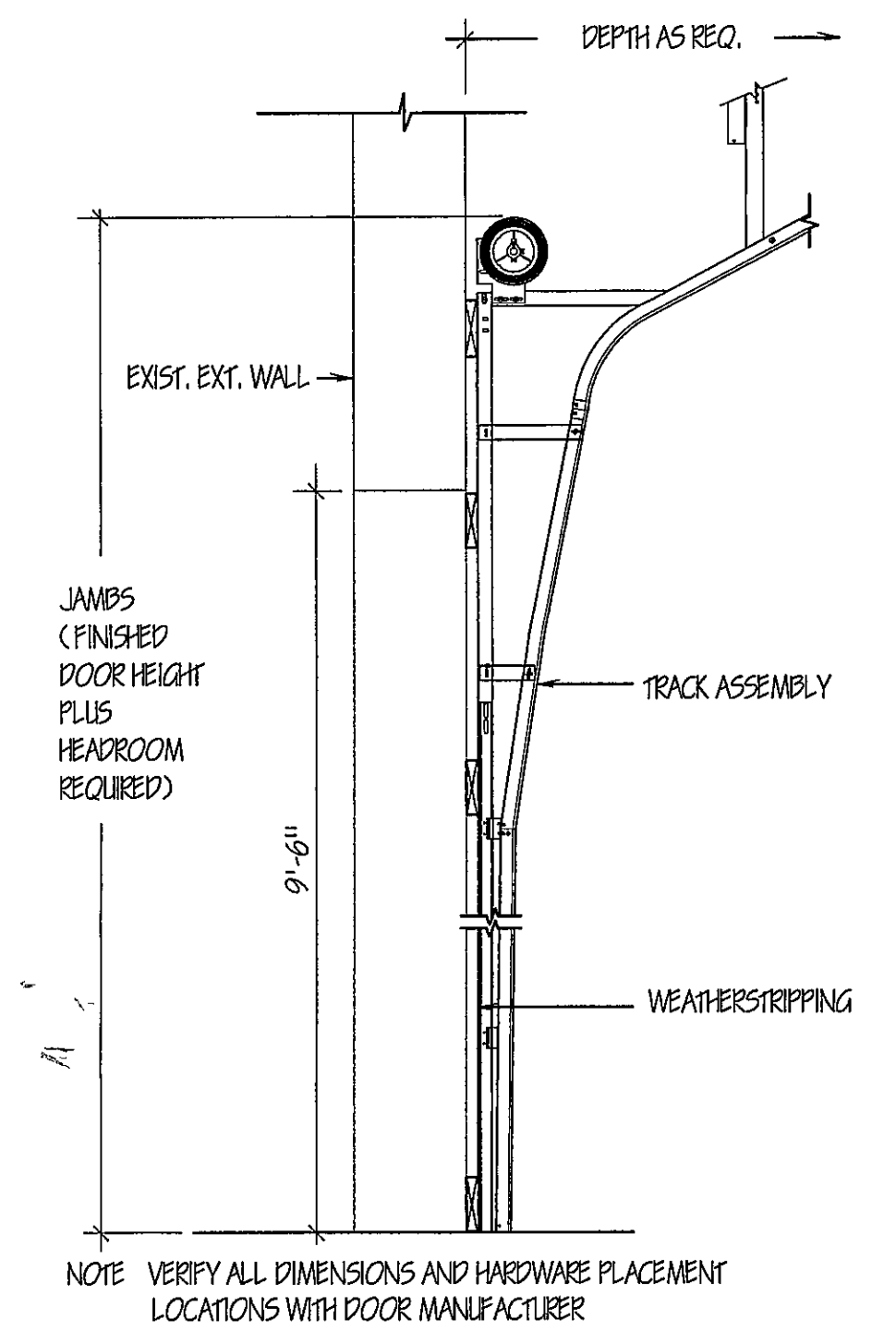
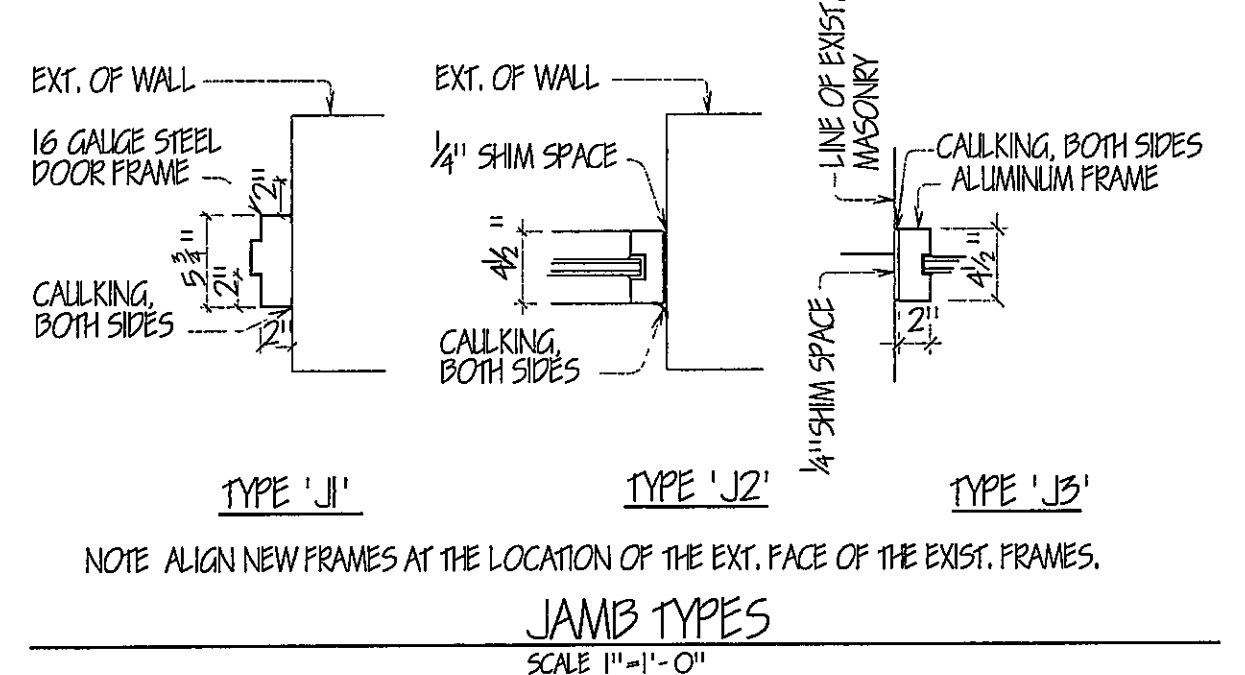
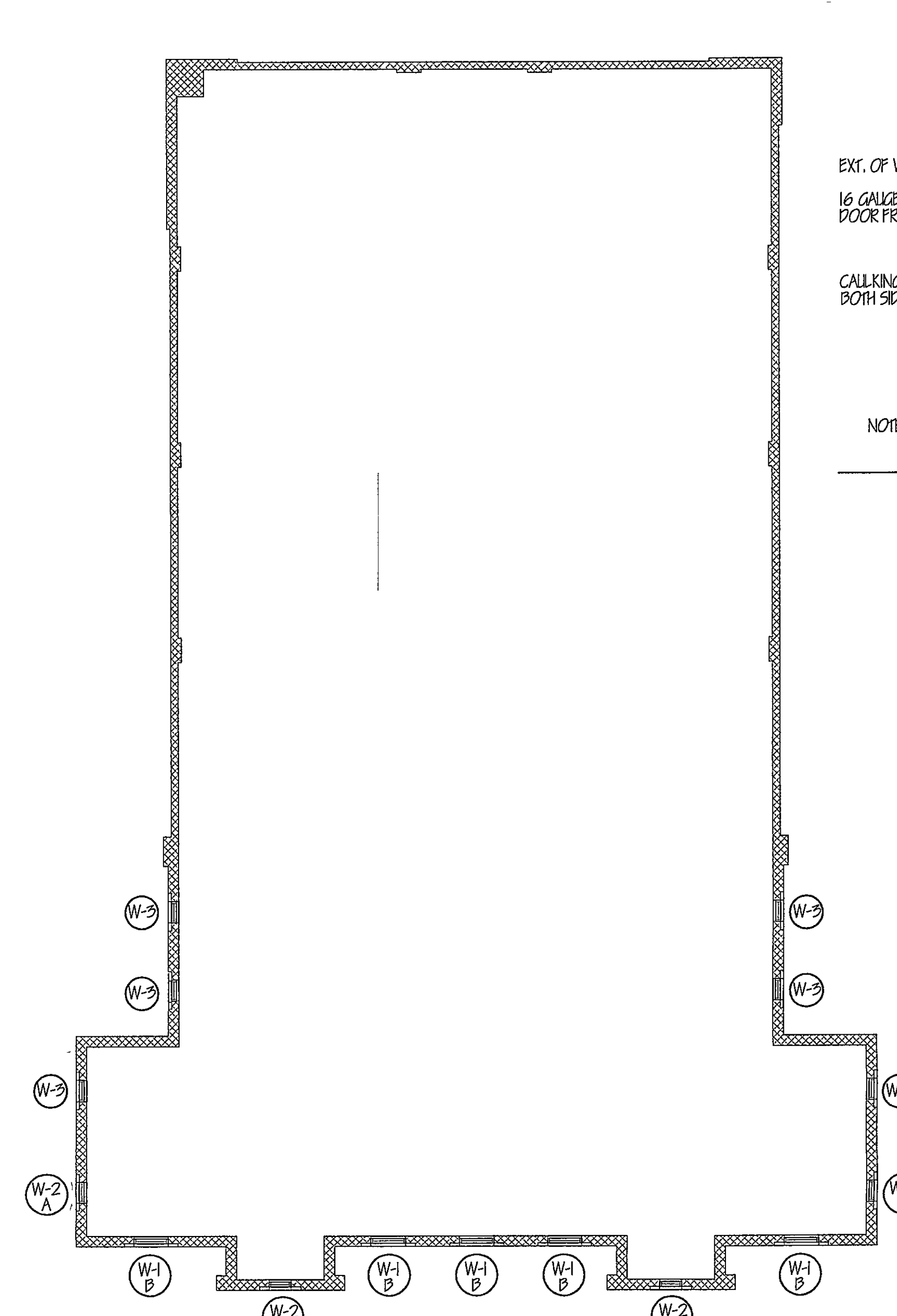
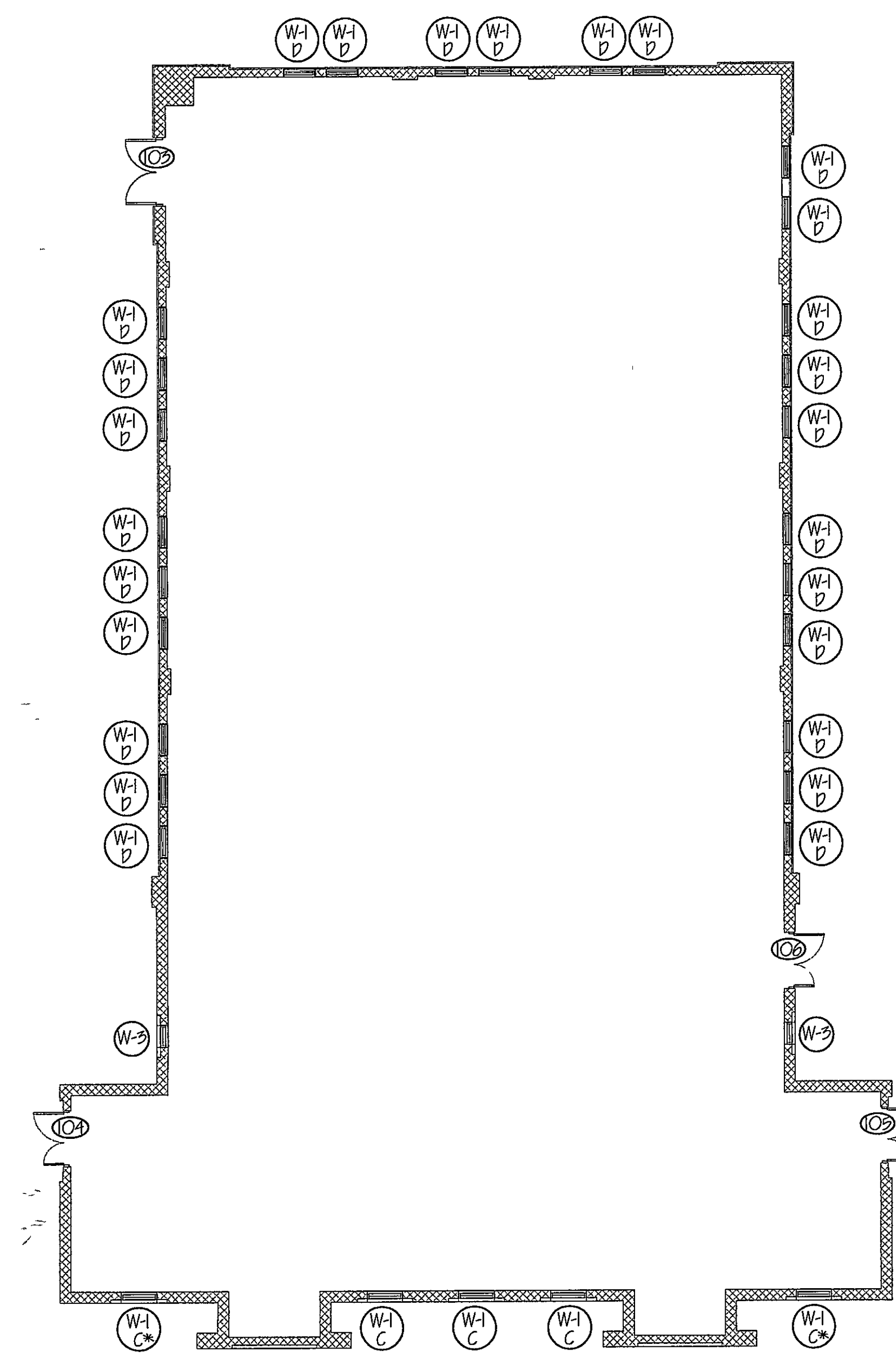
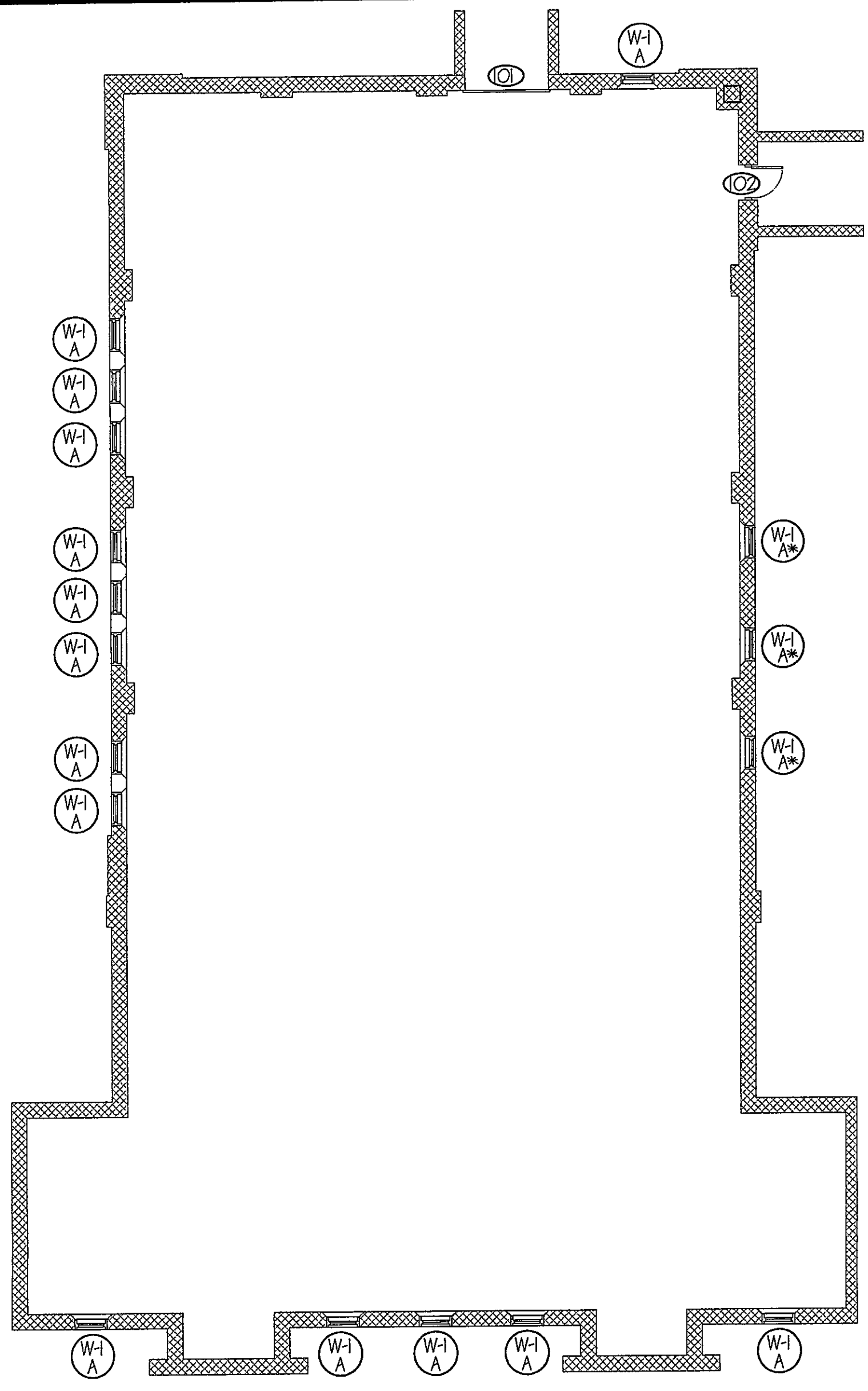
ARCH CHECKED	CIVIL/STRUC CHECKED	MECH CHECKED	ELEC CHECKED
-----------------	------------------------	-----------------	-----------------

PROJECT No. D.G.S. 961-23
PHASE 1

REPLACEMENT OF WINDOWS/DOORS
PA NATIONAL GUARD ARMORY
300 PINE STREET
BERWICK, PENNSYLVANIA 18603

SITE PLAN

DESIGNER L. DUFFY	DATE MAR 2010	SHEET No. A-1
SUPERVISOR	SCALE AS NOTED	of 2



GENERAL NOTES:

1. ALL WINDOW AND DOOR GLAZING, FRAMES, AND CONNECTIONS MUST MEET DGD 04-020-01 SECURITY REQUIREMENTS.
2. IT IS THE CONTRACTOR'S RESPONSIBILITY TO VERIFY ALL DIMENSIONS AND EXISTING CONDITIONS AT THE PROJECT SITE. ALL DRAWINGS PROVIDED ARE DIAGRAMMATIC IN NATURE ONLY.
3. ALL WORK SHALL BE PERFORMED IN COMPLIANCE WITH APPLICABLE CODES AND STANDARDS.
4. ANY MODIFICATIONS TO THE DESIGN OR COMPONENTS OF THIS BUILDING THAT MAY AFFECT ITS STRUCTURAL INTEGRITY SHALL BE REVIEWED AND APPROVED BY A PROFESSIONAL ENGINEER PRIOR TO CONSTRUCTION.
5. EXISTING WINDOWS AND DOORS SHALL BE DEMOLISHED IN ENTIRETY TO INCLUDE ALL ASSOCIATED HARDWARE. OPENINGS SHALL BE PROPERLY PREPARED FOR INSTALLATION OF NEW WINDOWS AND DOORS.
6. ALL ASSOCIATED LINTELS, STEEL, AND WOOD THAT ARE IN GOOD CONDITION OR REPAIRABLE SHALL REMAIN, AND REPAIRED IF NECESSARY. ITEMS SHALL BE CLEANED OF ALL SURFACE DEBRIS, DIRT, RUST AND FOREIGN MATERIAL, SHALL BE PROPERLY PREPARED FOR PAINTING, AND PAINTED PER PAINT SCHEDULE.
7. ALL STEEL (LINTELS, SILLS, TRIM) AND WOOD ASSOCIATED WITH DOORS/WINDOWS, THAT IS DETEIORATED OR WARPED BEYOND REPAIR, SHALL BE REMOVED AND REPLACE WITH NEW LIKE MATERIALS TO MATCH EXISTING SIZES, SHAPES, THICKNESS AND MATERIAL TYPES. ALL NEW MATERIALS SHALL BE PREPARED FOR PAINTING.
8. CONTRACTOR SHALL BE RESPONSIBLE FOR INSTALLING ALL NECESSARY BLOCKING, SHIMS, AND CALKING ASSOCIATED WITH INSTALLATION OF WINDOWS AND DOORS.
9. ALL SILL AND LINTEL JOINTS ARE TO BE REPAIRED, CLEANED AND RECALKED AS REQUIRED.
10. IT IS THE CONTRACTOR'S RESPONSIBILITY TO SUPPLY ALL CONNECTIONS, SHIMS, AND CALKING.
11. THE BUILDING IS LISTED ON THE HISTORICAL REGISTER.

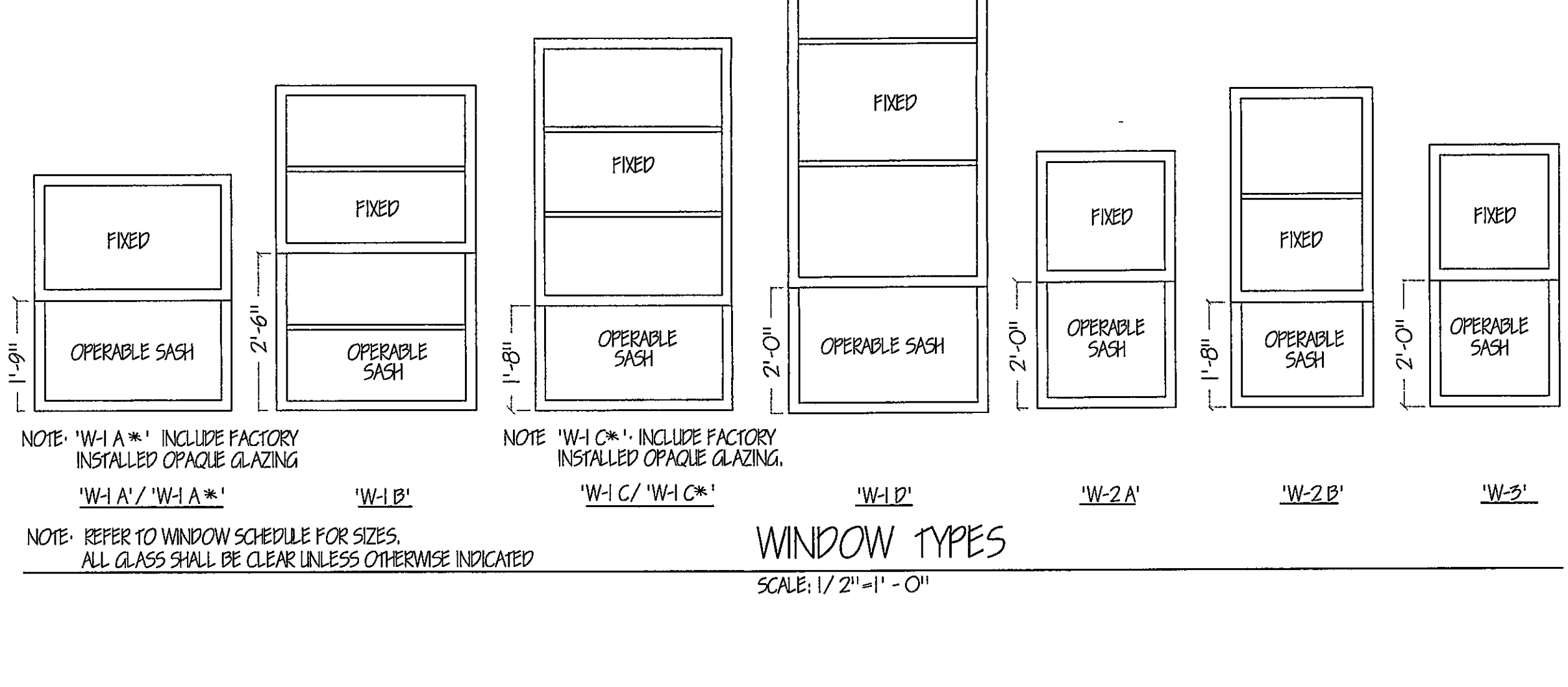
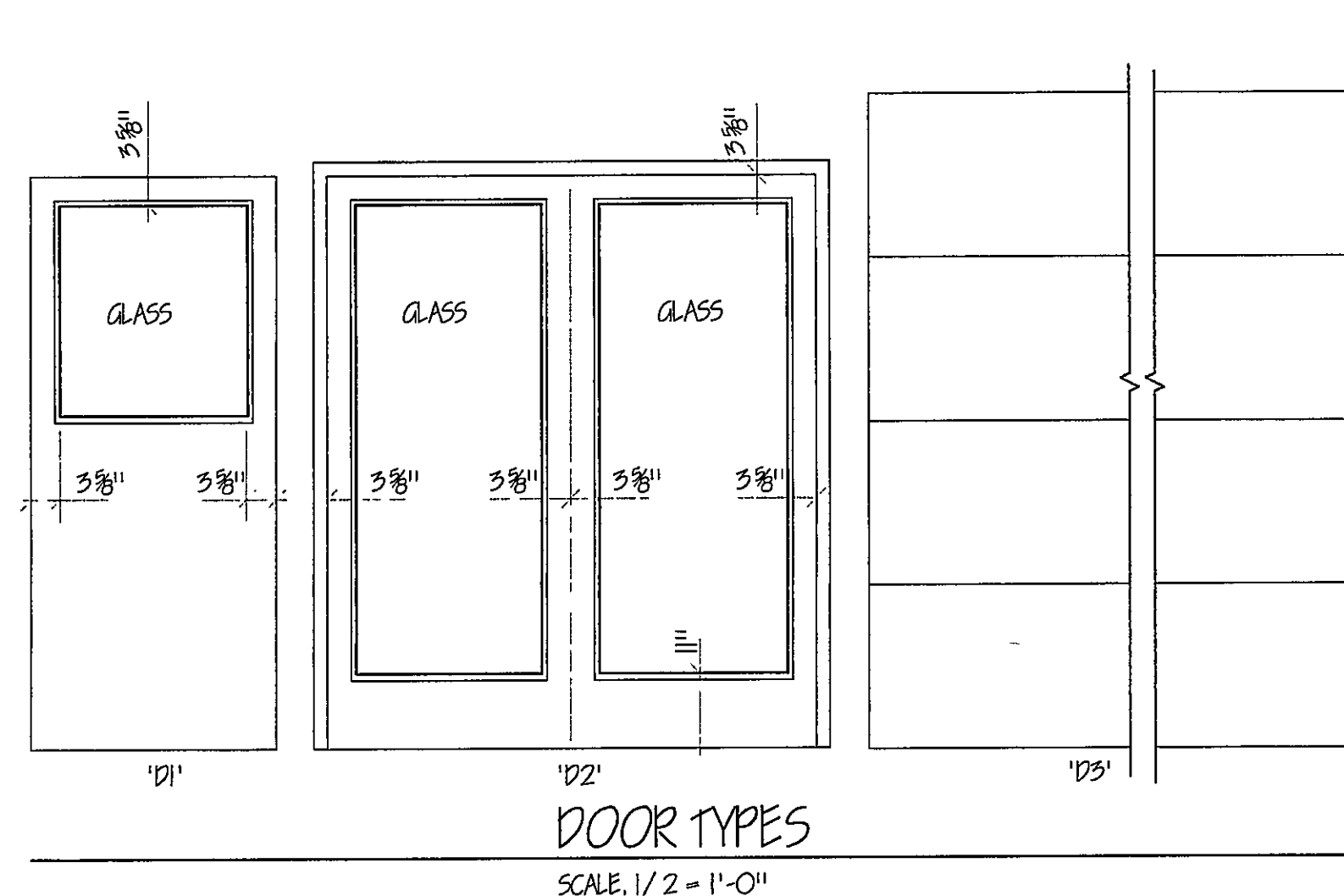
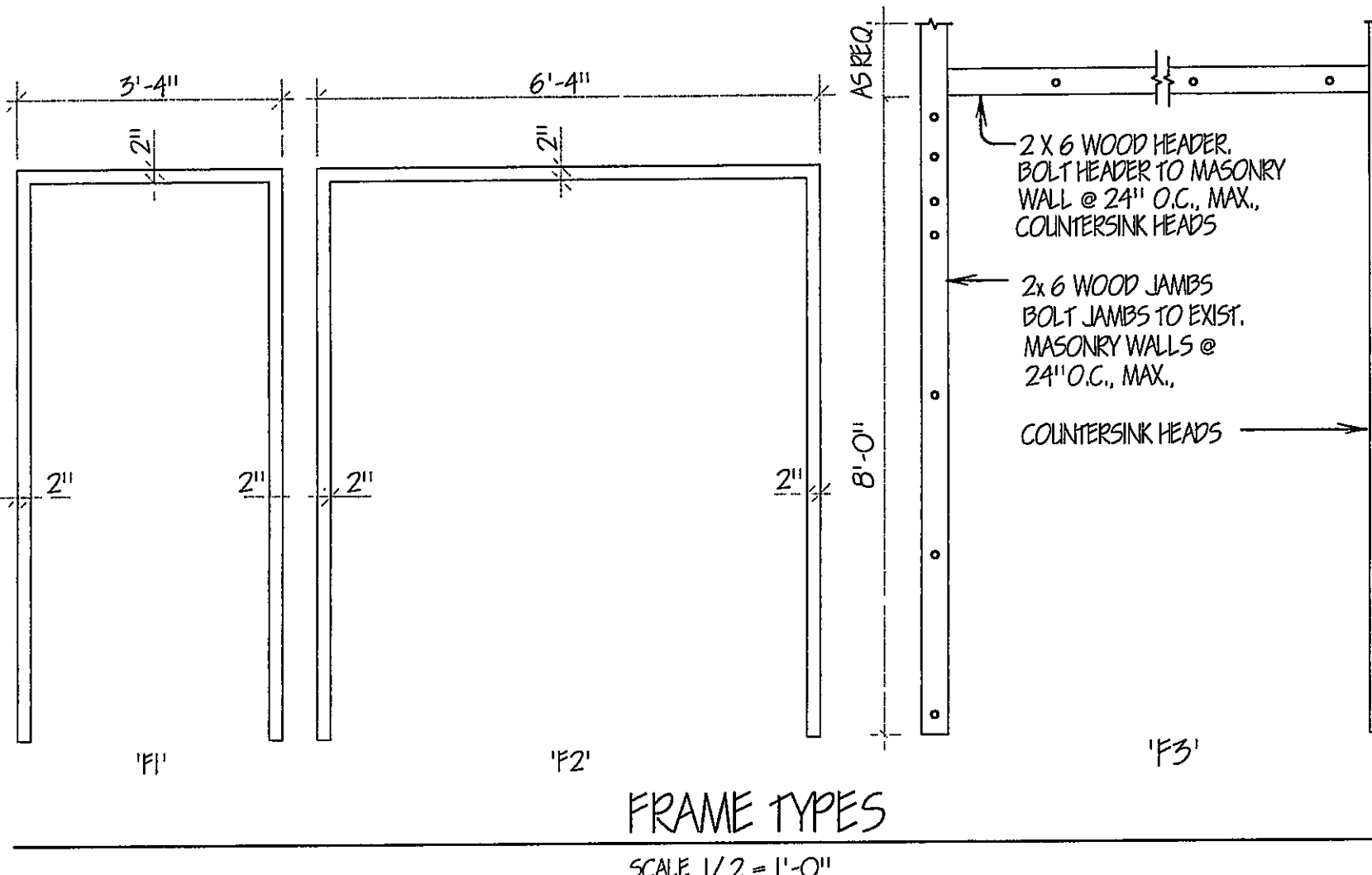
ABBREVIATIONS
(MAY APPEAR WITH OR WITHOUT PERIOD)

ALUM.	ALUMINUM
DEM.	DEMOLISHED / DEMOLITION
DET.	DETAIL
EXIST.	EXISTING
EXT.	EXTERIOR
HORIZ.	HORIZONTAL
MAT'L.	MATERIAL
MAX.	MAXIMUM
NO.	NUMBER
O.C.	ON CENTER
REQ.	REQUIRED
TYP.	TYPICAL

WINDOW/DOOR LOCATION PLAN - BASEMENT FLOOR
SCALE 3/32"=1'-0"

WINDOW/DOOR LOCATION PLAN - FIRST FLOOR
SCALE 3/32"=1'-0"

WINDOW/DOOR LOCATION PLAN - SECOND FLOOR
SCALE 3/32"=1'-0"



COMMONWEALTH OF PENNSYLVANIA
EDWARD G. RENDELL, GOVERNOR
DEPARTMENT OF GENERAL SERVICES
JAMES P. CREEDON, SECRETARY
BUREAU OF ENGINEERING AND ARCHITECTURE
HARRISBURG, PENNSYLVANIA

BUREAU DIRECTOR APPROVAL: _____
DESIGN DIVISION CHIEF APPROVAL: _____
USING AGENCY INITIALS: APPROVAL: _____

REGISTERED ARCHITECT: _____ PROFESSIONAL ENGINEER: _____
ARCH CHECKED: _____ CIVIL/STRUC CHECKED: _____ MECH CHECKED: _____ ELEC CHECKED: _____

PROJECT No. D.G.S. 961-23
PHASE 1

WINDOW TYPE	MAT'L	MASONRY OPENING		JAMB TYPE	REMARKS	NO. OF MUNTINS	
		WIDTH	HEIGHT			FIXED SASH	OPERABLE SASH
W-1 A / W-1 A*	ALUM.	3'-2"	3'-9"	J5	PROVIDE WINDOW SCREEN FOR OPERABLE SASH	0	0
W-1 B	ALUM.	3'-2"	5'-1"	J5	PROVIDE WINDOW SCREEN FOR OPERABLE SASH	1	1
W-1 C / W-1 C*	ALUM.	5'-2"	5'-11"	J5	PROVIDE WINDOW SCREEN FOR OPERABLE SASH	2	0
W-1 D	ALUM.	3'-2"	7'-11"	J5	PROVIDE WINDOW SCREEN FOR OPERABLE SASH	2	0
W-2 A	ALUM.	2'-3"	4'-1"	J5	PROVIDE WINDOW SCREEN FOR OPERABLE SASH	0	0
W-2 B	ALUM.	2'-3"	5'-1"	J5	PROVIDE WINDOW SCREEN FOR OPERABLE SASH	1	0
W-3	ALUM.	2'-1"	4'-2"	J5	PROVIDE WINDOW SCREEN FOR OPERABLE SASH	0	0

NOTE: MUNTINS SHALL BE EQUALLY SPACED VERTICALLY WITHIN INDIVIDUAL SASHES.

DOOR NUMBER	DOOR			FRAME			HARDWARE			REMARKS			
	SIZE			MAT'L	TYPE	GLASS	MAT'L	TYPE	JAMB DET.		SET NUMBER	KEY SIDE	CLOSER SIDE
	W	H	T										
101	6'-0"	8'-0"		STEEL	D5	SEE DOOR TYPES	EXIST.	F3		3			OVERHEAD SECT DOOR
102	3'-0"	7'-0"	1 3/4"	STEEL	D1	SEE DOOR TYPES	STEEL	F1	J1	1	EXTERIOR	INTERIOR	KEYING BY DEPARTMENT
103	5'-0"	5'-0"	6'-8"	ALUM.	D2	SEE DOOR TYPES	STEEL	F2	J2	2	EXTERIOR	INTERIOR	KEYING BY DEPARTMENT
104	5'-0"	2'-0"	6'-8"	ALUM.	D2	SEE DOOR TYPES	STEEL	F2	J2	2	EXTERIOR	INTERIOR	KEYING BY DEPARTMENT
105	5'-0"	2'-0"	6'-8"	ALUM.	D2	SEE DOOR TYPES	STEEL	F2	J2	2	EXTERIOR	INTERIOR	KEYING BY DEPARTMENT
106	5'-0"	2'-0"	6'-8"	ALUM.	D2	SEE DOOR TYPES	STEEL	F2	J2	2	EXTERIOR	INTERIOR	KEYING BY DEPARTMENT

VERIFY SCALE

BAR IS ONE (1) INCH LONG ON ORIGINAL DRAWING

0 1

IF BAR IS NOT ONE (1) INCH LONG, ADJUST SCALE ACCORDINGLY.

CONTRACTOR SHALL FIELD VERIFY ALL DIMENSIONS VARIANCE FROM CONTRACT DOCUMENTS NOT PERMITTED WITHOUT BUREAU OF ENGINEERING AND ARCHITECTURE APPROVAL.

DESIGNER: L. DUFFY
DATE: MAR 2010
SUPERVISOR: _____
SCALE: AS NOTED

REPLACEMENT OF WINDOWS/DOORS
PA NATIONAL GUARD ARMORY
300 PINE STREET
BERWICK, PENNSYLVANIA 18603

WINDOW/DOOR LOCATION PLANS, DETAILS, SCHEDULES

DESIGNER: L. DUFFY
DATE: MAR 2010
SUPERVISOR: _____
SCALE: AS NOTED

SHEET No. A-2 of 2

COMMONWEALTH OF PENNSYLVANIA DEPARTMENT OF GENERAL SERVICES BUREAU OF ENGINEERING AND ARCHITECTURE

HARRISBURG, PENNSYLVANIA

EDWARD G. RENDELL, GOVERNOR

JAMES P. CREEDON, SECRETARY

PROJECT NO. D.G.S. 961-23, PHASE 1
REPLACEMENT OF WINDOWS AND DOORS

PA NATIONAL GUARD ARMORY
BERWICK, COLUMBIA COUNTY, PENNSYLVANIA

SHEET INDEX

CS-1 Cover Sheet

General Construction

ARCHITECTURAL SHEETS

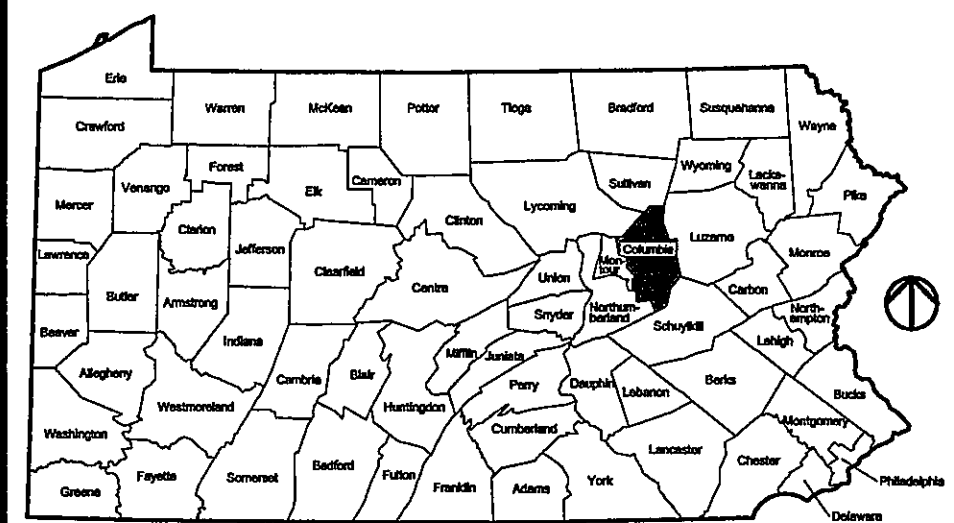
A-1 Site Plan

A-2 Window/Door Location Plans, Details, Schedules

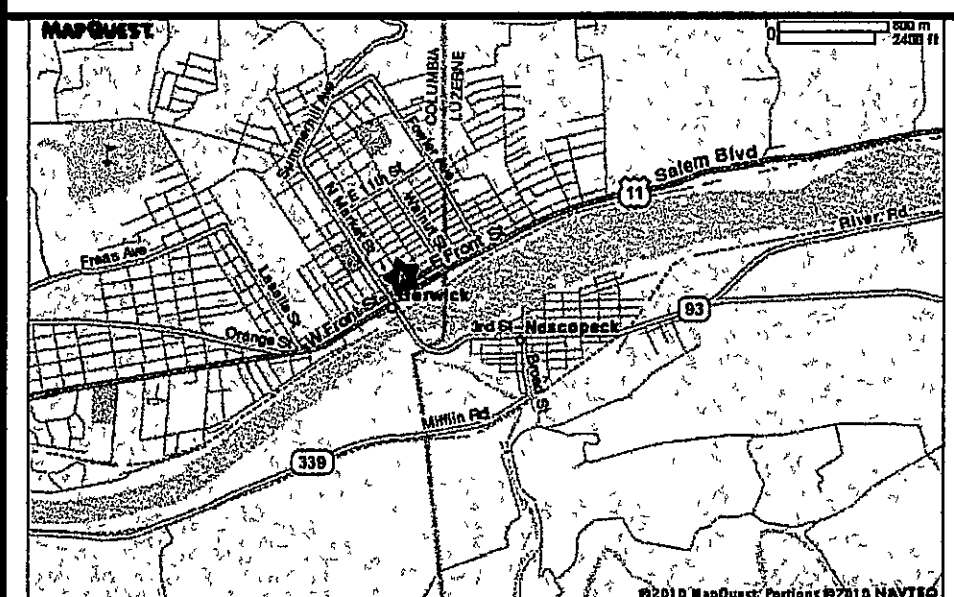
CODE APPROVALS

PENNSYLVANIA DEPARTMENT OF LABOR &
INDUSTRY BUILDING PERMIT 201090590

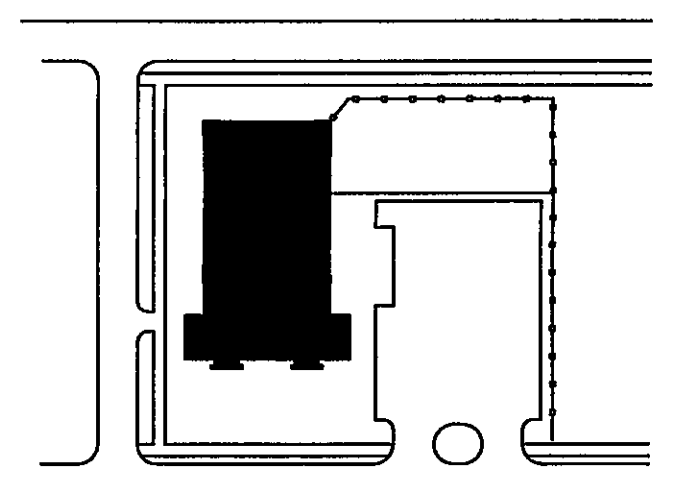
PROJECT LOCATION MAP



VICINITY MAP



CAMPUS / KEY PLAN



COMMONWEALTH OF PENNSYLVANIA
EDWARD G. RENDELL, GOVERNOR
DEPARTMENT OF GENERAL SERVICES
JAMES P. CREEDON, SECRETARY
BUREAU OF ENGINEERING AND ARCHITECTURE
HARRISBURG, PENNSYLVANIA

SHEETS LISTED IN INDEX:

APPROVED _____ DATE _____
GARY R. TAYLOR, P.E., DIRECTOR
BUREAU OF ENGINEERING AND ARCHITECTURE
DEPARTMENT OF GENERAL SERVICES

REGISTERED ARCHITECT _____ PROFESSIONAL ENGINEER _____

DGS 961-23 PHASE 1
BMC&E PROJ. No. C42A30-09-058

REPLACEMENT OF WINDOWS
AND DOORS
PA NATIONAL GUARD ARMORY
300 PINE STREET
BERWICK, PENNSYLVANIA 18603

COVER SHEET

DESIGNER L. DUFFY	DATE MAR 2010	SHEET No CS-1
SUPERVISOR	SCALE AS NOTED	